

BACH : Adagio dal Concerto per violino in Mi magg.

Adagio  
*sempre piano*

5  
9  
14  
18  
23  
31  
39  
47  
55  
63

A  
B

2

# VERDI - LA TRAVIATA (ATTO I - ALLEGRO VIVO)

## STRETTA DELL'INTRODUZIONE

7

**13** ALL.<sup>o</sup> VIVO

1 2 3 4 5 6 7 8 9

*p* *mf* *cresc.* *pp* *f* *cres.* *ff*

*poco a poco*

**14**

**15**

G. Verdi Otello

**POCO PIÙ MOSSO**  $\text{♩} = 80$   
**I BASSI CONTRABASSI E CORDE - CON SORDINA**  
*legato*

*un po' marcato*

*più marcato* *f* *ppp* *morendo*

*dim.* *p*

**X**

*dim.* *p*

**VIOLONC.**

*Un po' marcato* *cresc.*

**BASSI** *staccate*

*f* *cresc.* *ff* *ff*

*3*

**LEVARE LE SORDINE**

# SYMPHONY No. 5

L. VAN BEETHOVEN, Op. 67  
(1770 - 1827)

Allegro  $\text{♩} = 96$

The image displays the first six staves of the bass line for the first movement of Beethoven's Symphony No. 5. The tempo is marked 'Allegro' with a quarter note equal to 96 beats per minute. The key signature is one flat (B-flat major/D minor). The score includes various dynamic markings: *pp* (pianissimo), *f* (forte), *sf* (sforzando), and *cresc.* (crescendo). Tempo markings include *poco rit.* (poco ritardando) and *a tempo*. There are also articulation marks like accents and slurs, and fingerings such as '2 1' and '1 2'. The notation is in bass clef with a key signature of one flat.

This page of musical notation consists of seven staves of music, likely for a bass instrument. The notation includes various musical symbols such as notes, rests, and dynamic markings. The first staff has fingering numbers 1 4 1 and 1 4 above it. The second staff has fingering numbers 1 4 1 0 and a flat sign (b) above it. The third staff is a continuous line of notes. The fourth staff has fingering numbers 1 1 0 above it, and dynamic markings *f* and *dim.* below it. The fifth staff has a dynamic marking *p* below it. The sixth staff has the instruction *sempre più* below it, followed by a dynamic marking *pp* further to the right. The seventh staff is a shorter line of music.

# MOZART 40

21

ALLEGRO

1

7

13

18

C

V

SINFONIA KV 550 N° 40

W.A. MOZART

6

Basso

Allegro assai

IV

8

16

25

34

42

50

55

61

69

77

85

<sup>1</sup>In der zweiten Fassung Cl. I.

107 *p* *f*

115

121 *f*

129 *p*

138

146 6

154 1

165 1

174

182 3

191 *f*

199 *f*



207  
*p* *f* *p* *f* *f*

215  
*f* *p* *f*

223

230

235

243  
14 *OK!*  
*p*

265  
*p*

273  
*f*

281  
*p*

289  
*f*

296

303

<sup>1</sup>In der zweiten Fassung Cl. I.

CONTRABBASSO

PULCINELLA (Ouverture dal balletto)

*Vivo* Pergolesi-Strawinsky

*ff*

6 *ff* *sempre simile*

14 *simile* *glissando*

21

27

34 *très fort (détaché)*

41 *(dolce)*

47 3

55 4

Saint-Saens — Carnival of the Animals

2

CONTREBASSE

N° 2

Poules et Coqs

Allegro moderato

34



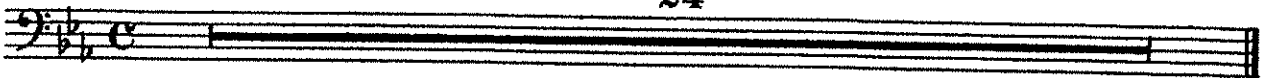
N° 3

Hémiones

(Animaux véloces)

Presto furioso

24



N° 4

Tortues

Andante maestoso

1<sup>er</sup> Piano

C. BASSE



N° 5

L'Éléphant

Allegretto pomposo

2<sup>d</sup> Piano

C. BASSE SOLI



Saint-Saens — Carnival of the Animals

CONTREBASSE

3

mf

2

3

f

4

ff

Detailed description: This block contains five staves of musical notation for the contrabass. The first staff begins with a dynamic marking of *mf* and includes a circled number '2' above a measure. The second staff continues the melodic line. The third staff features a circled number '3' above a measure and a dynamic marking of *f*. The fourth staff has a circled number '4' above a measure and a dynamic marking of *ff*. The fifth staff concludes the sequence with various articulation marks.

N° 6

Kangourous

Moderato

3 3 1 3 3 2 5 3

Detailed description: This block shows the beginning of the 'Kangourous' movement. It consists of a single staff with a bass clef and a common time signature. The tempo is marked 'Moderato'. The notation includes a series of rhythmic patterns: a triplet of eighth notes, a quarter note, a circled number '1' above a quarter note, another triplet of eighth notes, a quarter note, a circled number '2' above a quarter note, a half note, and a final triplet of eighth notes. The key signature has two flats.

N° 7

Aquarium

Andantino

39

Detailed description: This block shows the beginning of the 'Aquarium' movement. It consists of a single staff with a bass clef and a common time signature. The tempo is marked 'Andantino'. The notation is a long, continuous line representing the first 39 measures of the piece.

N° 8

Personnages à longues oreilles

Tempo ad lib

24

Detailed description: This block shows the beginning of the 'Personnages à longues oreilles' movement. It consists of a single staff with a bass clef and a 3/4 time signature. The tempo is marked 'Tempo ad lib'. The notation is a long, continuous line representing the first 24 measures of the piece.

N° 9

Le Coucou au fond des bois

Andante

42

Detailed description: This block shows the beginning of the 'Le Coucou au fond des bois' movement. It consists of a single staff with a bass clef and a 3/4 time signature. The tempo is marked 'Andante'. The notation is a long, continuous line representing the first 42 measures of the piece.